

IHE[®] | EXPERIENCE
EUROPE | DAYS

BRUSSELS 2026
25-26 MARCH 



IHE's support for EHDS implementation IHE PRISM



Aaron Goldmuntz
Managing Director, IHE International
agoldmuntz@ihe.net



The logo for IHE PRISM features a stylized triangle on the left composed of several overlapping, fan-like segments in shades of purple, pink, red, and orange. To the right of this graphic, the text "IHE" is written in a bold, dark blue sans-serif font with a registered trademark symbol, and "PRISM" is written below it in a larger, dark blue sans-serif font.

IHE
PRISM

- IHE PRISM is a new program launched by *IHE International* to prioritize Interoperability for specific market imperatives.
- Intended to leverage IHE's proven process, to focus and accelerate specific market needs into clear, testable specifications for ready-to-adopt implementations.

IHE
INTERNATIONAL



Benefactor Members

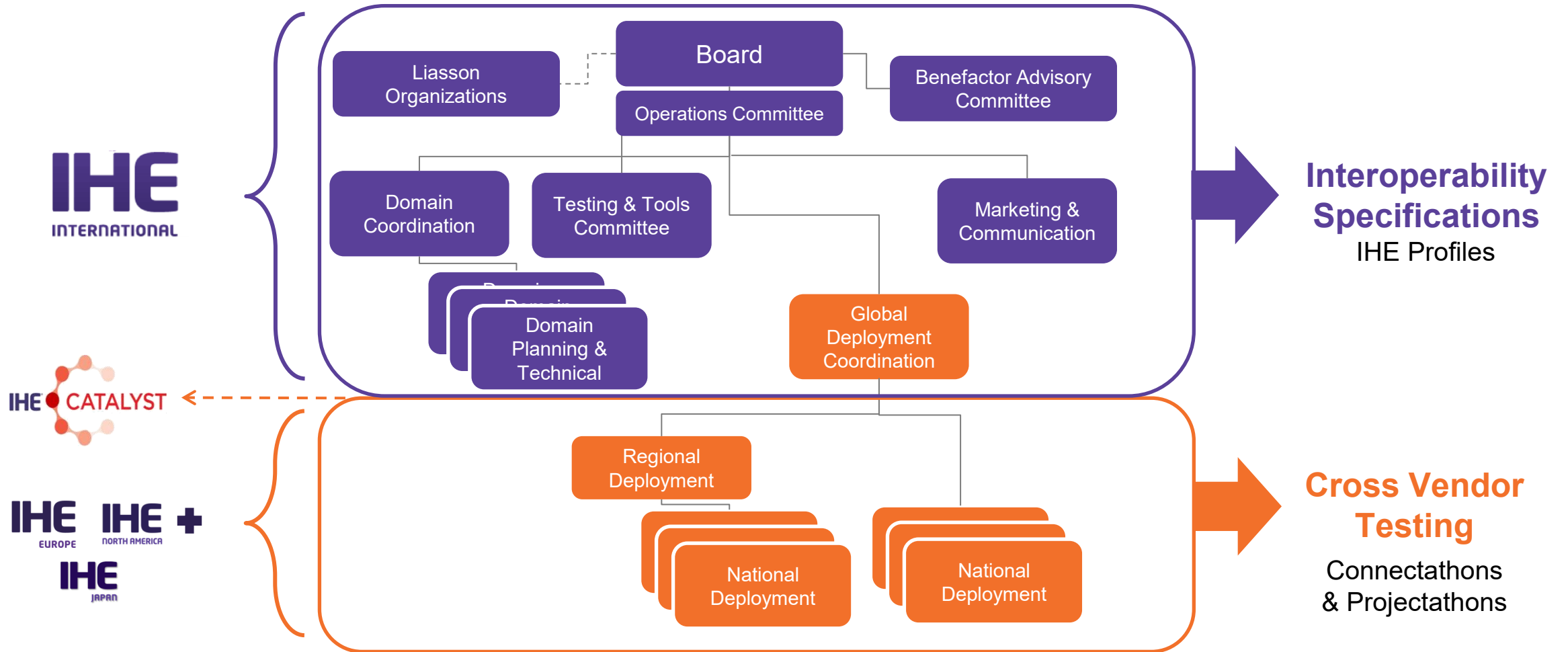


Australian Government
Australian Digital Health Agency



Integrating
the Healthcare
Enterprise

IHE International was launched in 1999, in response to a market need to facilitate improvements in the implementation of standards into vendors' products

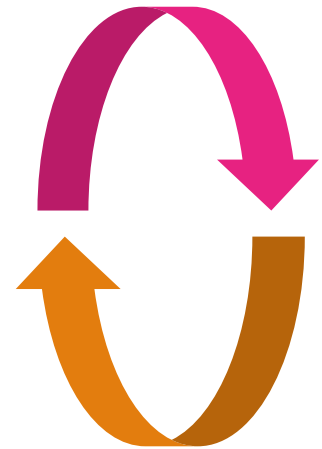




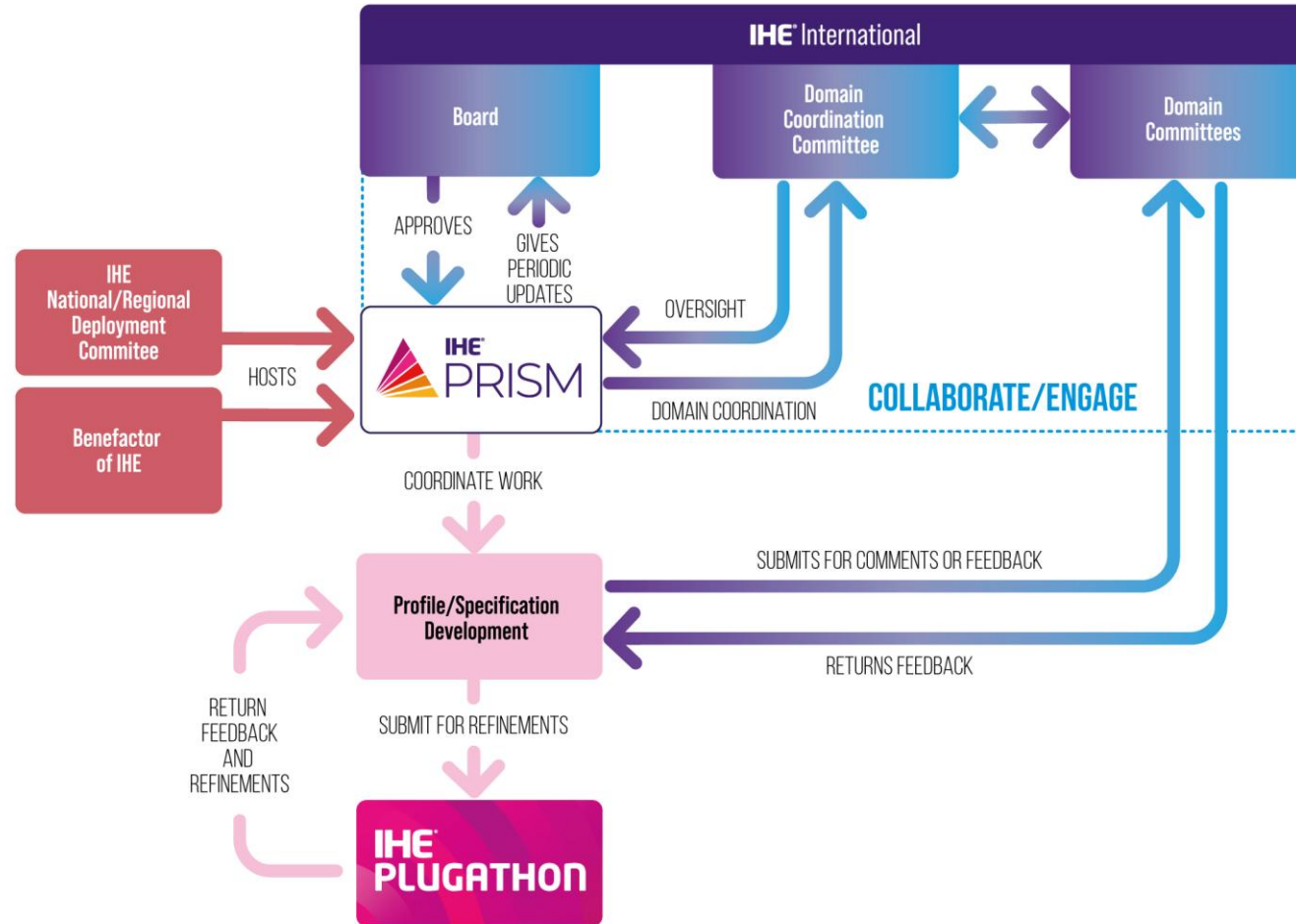
- A repeatable structure under which multiple hosted initiatives can run,
- Each **IHE PRISM** is intended to rapidly develop interoperability guidelines into structured, testable outputs in coordination with IHE Domains for broader global adoption.
- The first IHE PRISM is recently launched IHE-Europe, **IHE PRISM EHDS** focusing on the adoption of the European Health Data Space (EHDS), working with key European stakeholders to accelerate testable specification definition, including collaboration with HL7-Europe (Euridice)
- Exploring additional PRISM programs (for example Artificial Intelligence)



- IHE Prisms build on IHE's proven methodology, developing standards-based Interoperability Profiles with direct coordination with existing IHE Domain committees.
- Aligned and the full testing continuum, including IHE Connectathon week testing events and the Gazelle testing tools and testing services supported by IHE Catalyst– to help healthcare ecosystems move from intent to interoperable reality, faster and with confidence.



- Each IHE PRISM can be hosted or supported by IHE National/Regional Deployment Committees or IHE Benefactor Members, created new value and engagement for our ecosystem.
- IHE PRISM brings together experts, implementers, vendors, and policymakers in a neutral, agile co-creation space to turn local priorities and market/regulatory needs into implementable, testable specifications.





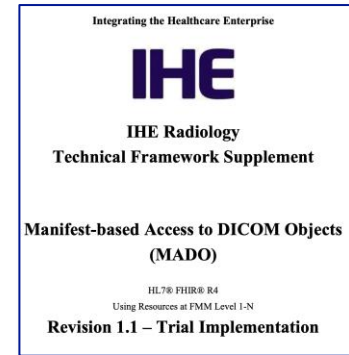
- Prioritize specific market, regional or local needs
- Standards-aligned, testable outputs: draft, profile-shaped specs, profile candidates, and test plans/cases.
- Proven IHE methods: real-world use cases, actor/transaction modeling, structured documentation, continuous alignment with IHE Domains
- Open and neutral: non-proprietary deliverables with the assets needed for Connectathon testability.
- Profiles existing standards including DICOM® and HL7® (including HL7 FHIR®) for real-world implementation
- End-to-end testing readiness: outputs exercised at Plugathons and Connectathons using Gazelle tools



The first IHE PRISM, is [IHE PRISM EHDS](#) hosted by [IHE-Europe](#), is working with the European community to support adoption of the European Health Data Space (EHDS) regulation. It will leverage and, where needed, extend relevant IHE profiles, explore opportunities for new specifications, and align outputs with IHE's testing continuum to enable ecosystem readiness. IHE Europe is committed to collaborating with partner SDOs such as HL7-Europe.

Initial IHE PRISM EHDS activities include:

- Coordinate extensions of existing IHE domain specification and development of new IHE specifications,
 - Such as the [Manifest based Access to DICOM Objects](#) (MADO) profile published last week and testing this week!
- Support [EURIDICE](#), a joint-collaboration between IHE-Europe and HL7-Europe
- Support Xt-EHR including hosting the [XT-EHR Projectathon](#) testing event going on this week
- Support ecosystem alignment on testing and validation needs in collaboration with IHE Catalyst.



- This initiative presents a new opportunity for our community to align and support the European Commissions' vision for European Health Data Space, support the Member States tasked with implementation and the vendors community who will need to build and test compliant products.
- We welcome your engagement and support of this activity

