

VIENNA 2025 JUNE 23/27

IHE [®] | CONNECTATHON [®]

EUROPE



2025 IHE-Europe Connectathon ~ What's new in IHE Radiology ~



Anne-Gaëlle Bergé

IHE Connectathon
Technical Manager



Andrei Leontiev

Visage Imaging
IHE Radiology Technical
Committee Co-Chair



Lynn Felhofer

Technical Project Manager
IHE Radiology Domain

Please keep your microphone muted

Questions during the session? Please use the chat box.
We will address the questions in the second part of the
webinar

Note that this webinar will be recorded and made available
on IHE-Europe Youtube channel. Slides will be available on
Connectathon webpage

- Vienna Connectathon - What's happening? How can I join?
- IHE Radiology Profile Evolution
- The latest in IHE Radiology
- Dig Deeper - IHE Radiology Resources
- Focus on Web-based access to images, Reporting Workflow and Content,
- RAD Testing Considerations for EU IHE Connectathon 2025
- An offer for first-time IHE Connectathon participants
- Resources
- Contact us
- Q&A session

Join us at Vienna Allianz Stadion, June 23-27, to test your product nearly on the field

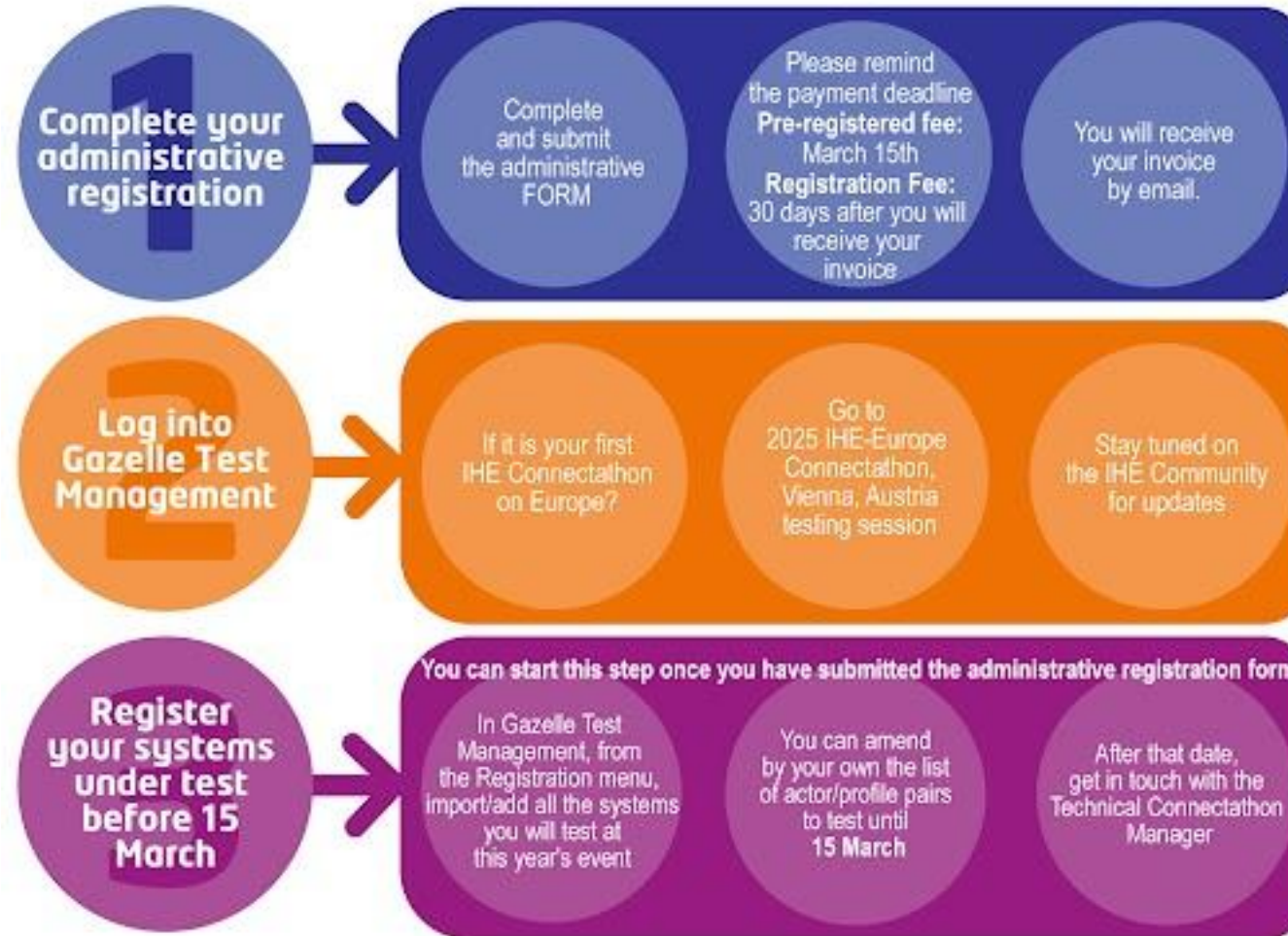


IHE Connectathon is a formal interoperability testing event.

It is the best place to...

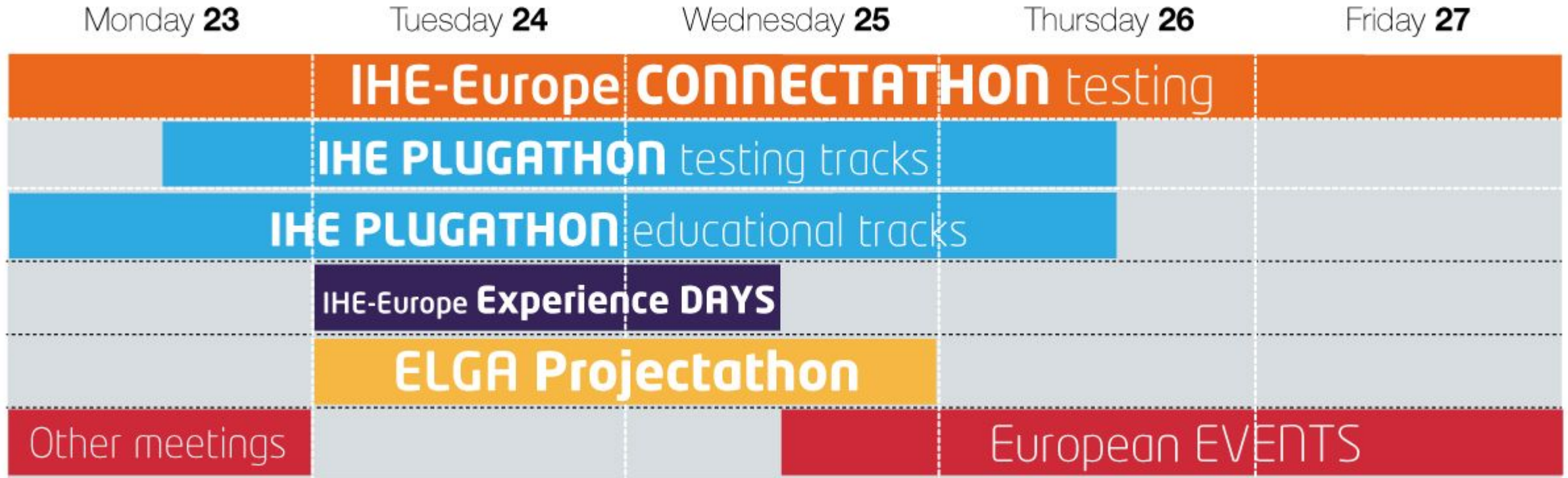
- **Test** the IHE implementation of your product
- **Find and fix** bugs in your product
- **Complete** the last mile of your software development
- **Share** with experts, including the authors of the IHE Profiles
- **Meet** other professionals who face the same challenges as you do
- **Learn** from the community

How to register for the event?



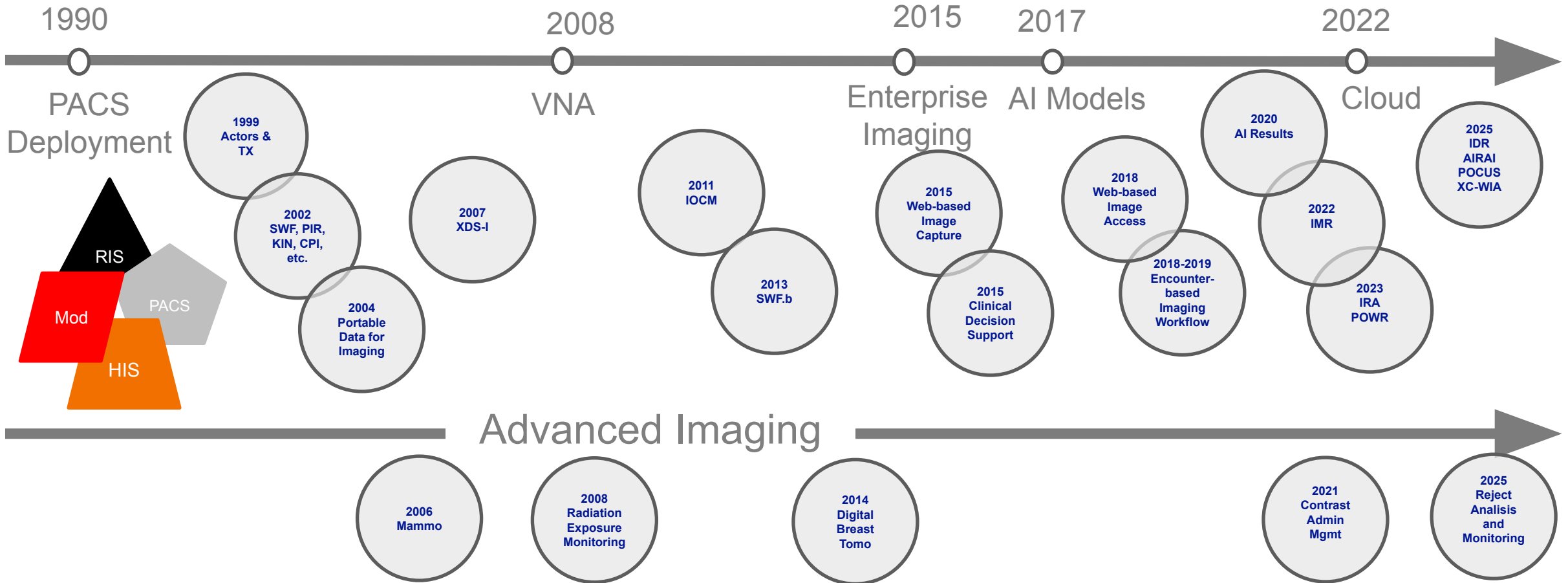
<https://connectathon.ihe-europe.net/connectathon-week-2025>

Other interoperability events happening in Vienna



[Link to IHE-Europe Experience days webpage](#)

IHE Radiology Profile Evolution



New profiles for [Public Comment](#) in 2025:

Cross-Community Web-Based Image Access – available for Public Comment until late March

- The Cross-Community Web-based Access for Imaging (XC-WIA) Integration Profile specifies actors and transactions to query and retrieve patient-relevant medical imaging data being held by other communities in a multi-community healthcare information-sharing setup.

Encounter-Based Imaging Workflow with Extensions for Lightweight Devices and Point-of-Care Ultrasound Image Management and Reporting – available for Public Comment until late March

- Encounter-Based Imaging Workflow (currently in Trial Implementation) is further augmented with the POCUS option detailing the interoperability requirements specific for Point-of-Care Ultrasound Image Management and Reporting.

AI Result Assessment for Imaging– available for Public Comment until late March

- This profile addresses the need to document and communicate the results from an assessment process that rates the individual results of AI solutions.

Not for testing at the Vienna Connectathon, but review and comment by Connectathon participants is encouraged!

New profiles for first-time testing at the Vienna Connectathon, with sufficient system registration:

Reject Analysis and Monitoring (RAM) Profile

- The profile standardizes storage, query, and retrieval of Rejection Note SR instances. It is intended to support capturing quality issues at the time of acquisition, and/or during subsequent QA and image reporting steps.

Prioritization of Worklists for Reporting (POWR) Profile

- Standardizes the data interfaces to provide details relevant to the prioritization of studies on a medical imaging reading worklist

Imaging Diagnostic Report (IDR) – expected Trial Implementation - for testing in 2026

- This profile addresses imaging-based reports for Radiology, and other imaging-based clinical specialties such as Cardiology, OB/Gyn, Oncology, Pathology and Optometry. It describes a full FHIR-based encoding of all report content and common imaging report sections, including order, history, procedure/technique, comparison, findings/observations, impression/conclusion, signatures, and addenda.

These newer profiles may be tested at the Vienna Connectathon, with sufficient system registration:

[Integrated Reporting Applications \(IRA\) Profile](#)

- Specifies how applications that are used together during reporting (e.g. image display, report creator, clinical applications, AI tools, etc) share information using FHIRcast.

[Interactive Multimedia Report \(IMR\) Profile](#)

- First HL7 FHIR-based Profile published in IHE RAD
- Specifies how a diagnostic report with interactive multimedia content can be reliably encoded, communicated and presented.

[Contrast Administration Management \(CAM\) Profile](#)

- Specifies how to record and distribute contrast agent administration details for imaging and image-guided procedures.

- All IHE RAD Technical Framework documents: <https://profiles.ihe.net/RAD/>
- **Prioritization of Worklists for Reporting (POWR) Profile**
 - [POWR Profile Definition](#)
- **Integrated Reporting Applications (IRA) Profile**
 - [IRA Profile Definition](#)
- **Interactive Multimedia Reporting (IMR) Profile**
 - [IMR Profile Definition](#)
- **Contrast Administration Management (CAM) Profile**
 - [CAM Profile Definition](#)
- **AI Results (AIR) Profile**
 - [One-page AIR Overview](#)
- **Web-based Image Access (WIA) Profile – now Final Text**
 - [One-page WIA Overview](#)
- **Web-based Image Capture (WIC) Profile – now Final Text**
 - [One-page WIC Overview](#)

Web-based Image Capture (WIC)

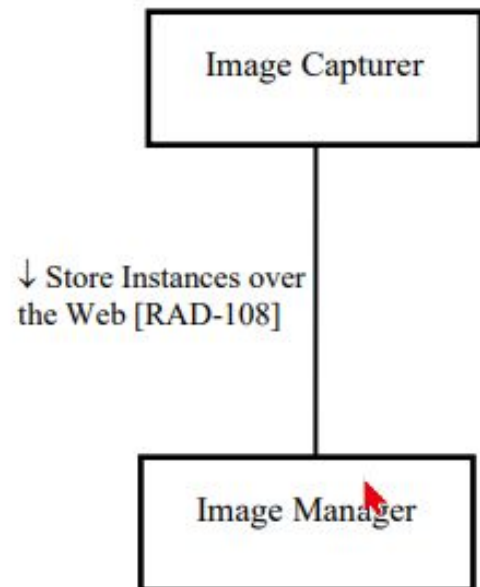


Figure 38.1-1: WIC Actor Diagram

Web-based Image Access (WIA)

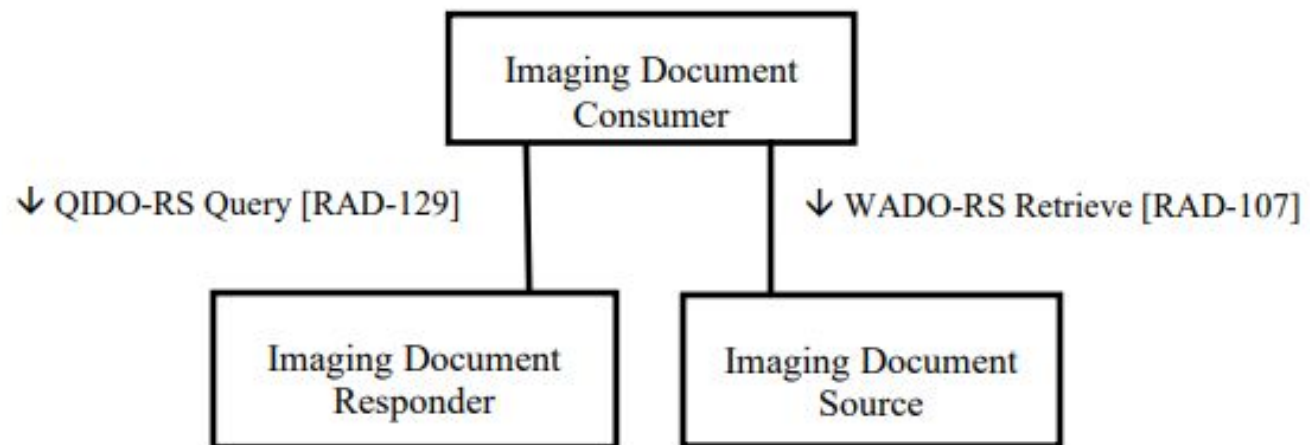
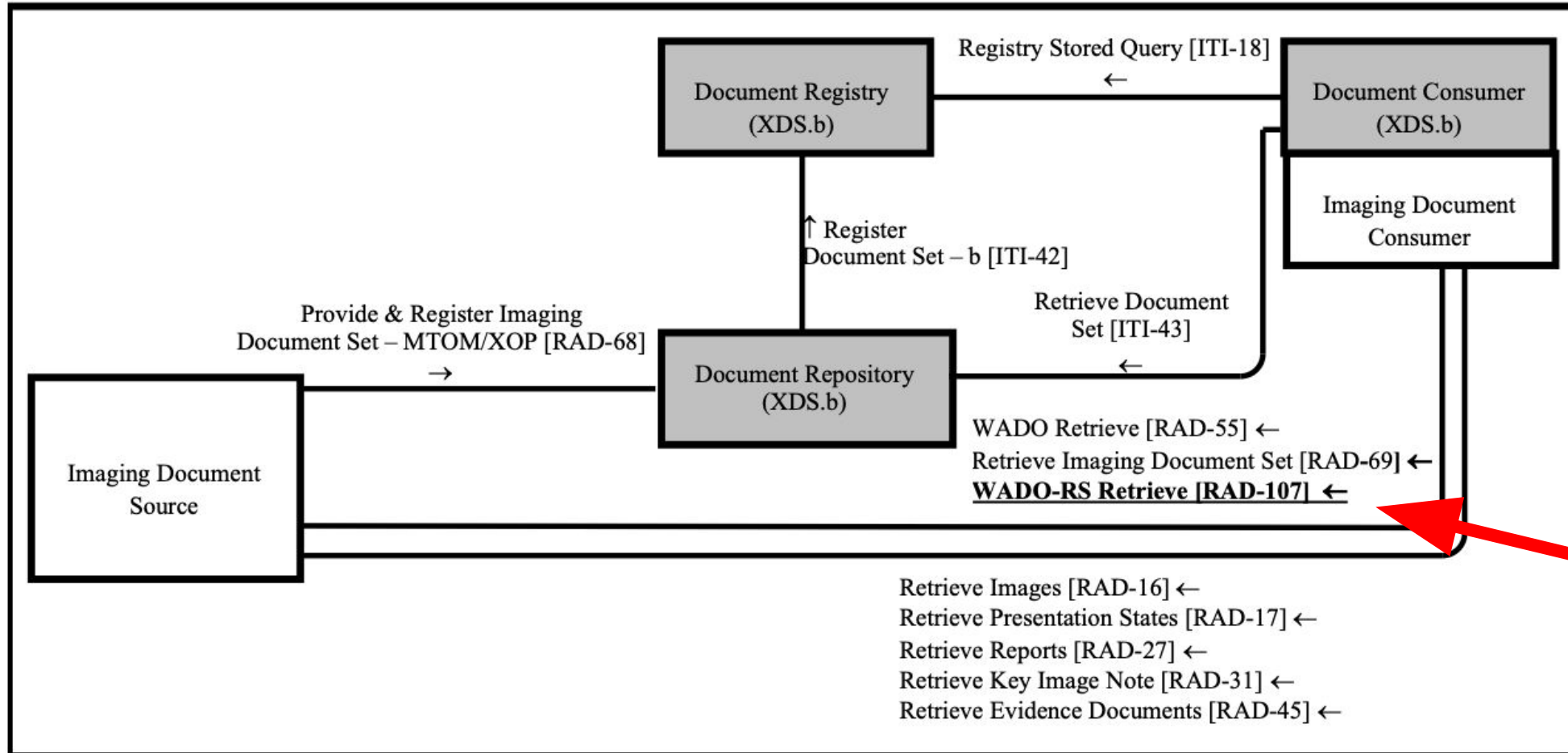
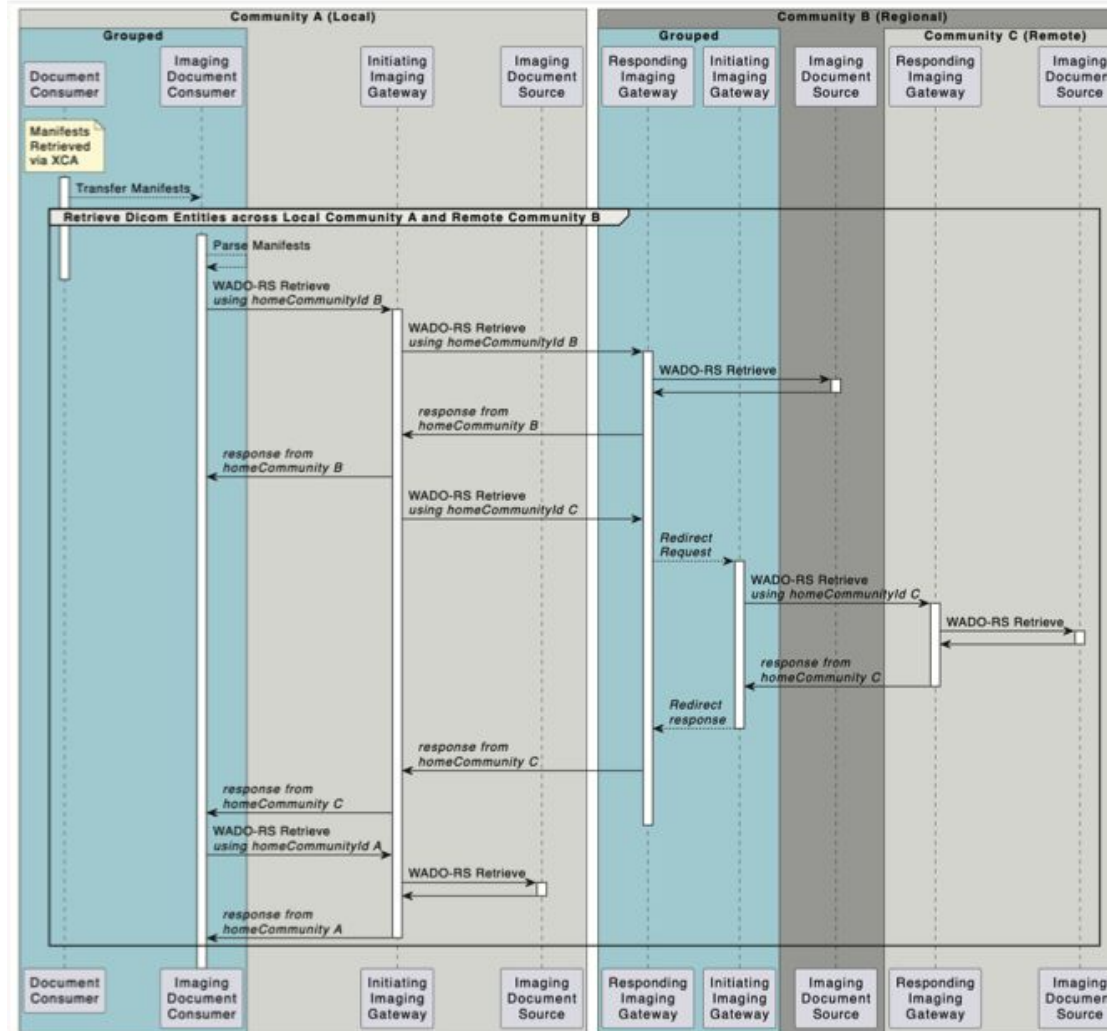


Figure 42.1-1: WIA Actor Diagram

WADO-RS Retrieve Option for XDS-I Profile *(added in 2024)*



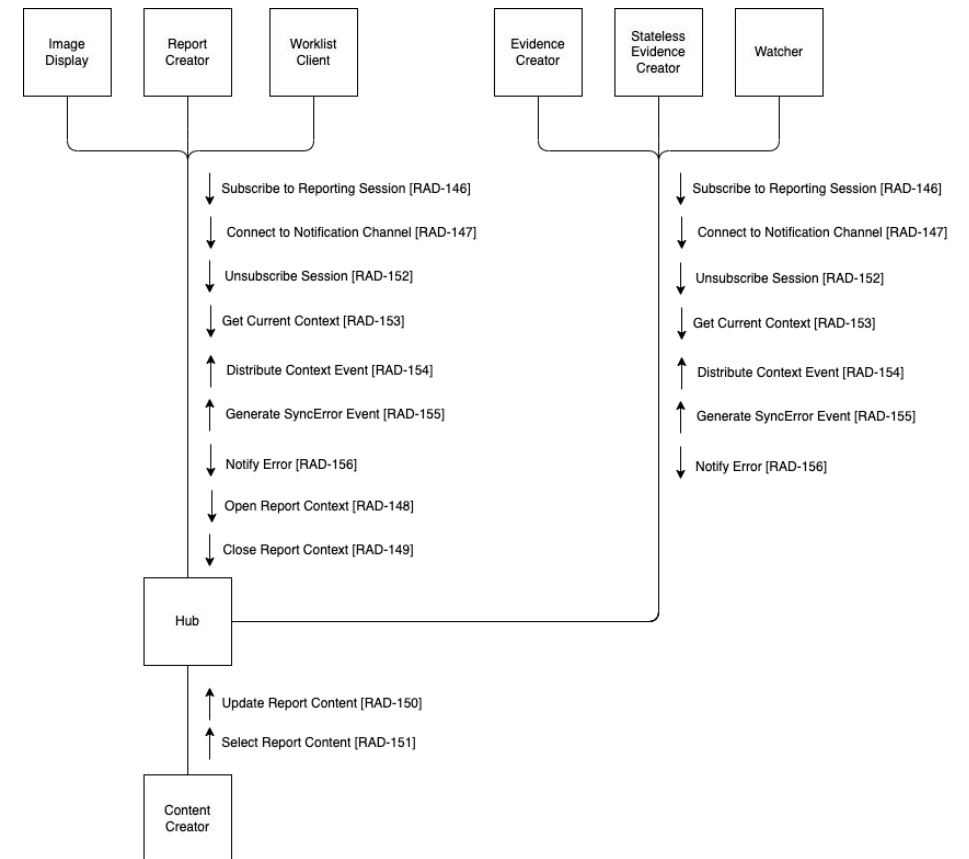
Cross-Community Web-Based Image Access (XC-WIA) in Public comment



Interactive Multimedia Reporting (IMR)



Integrated Reporting Applications (IRA)



AI Results (AIR)

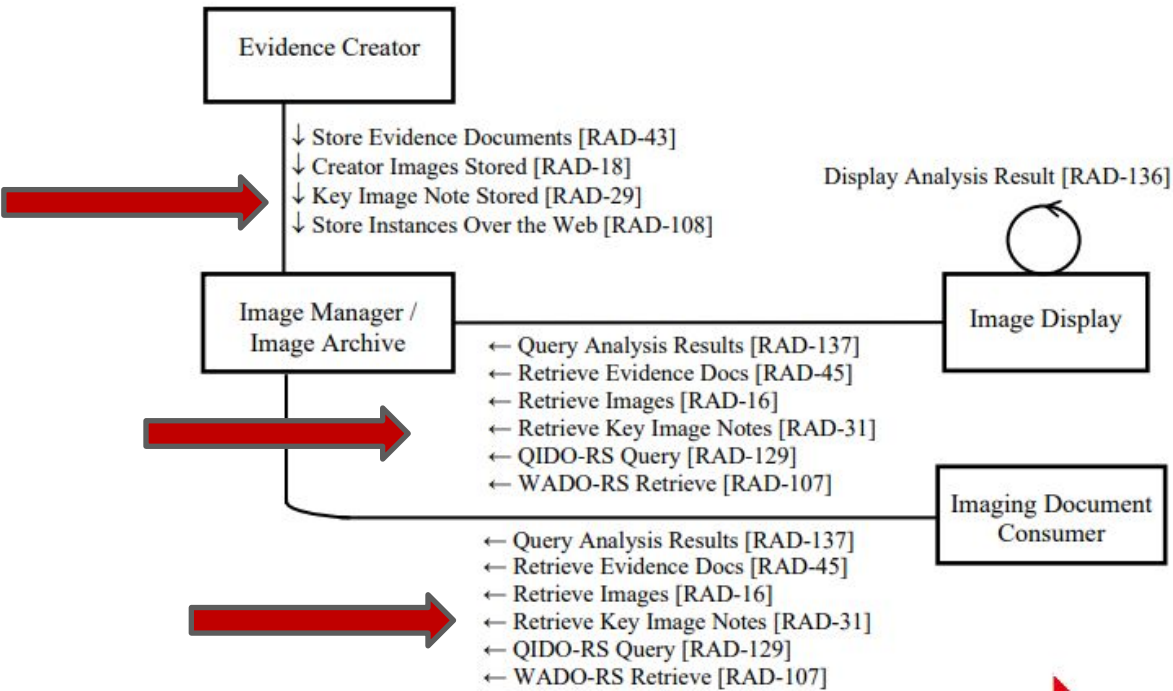
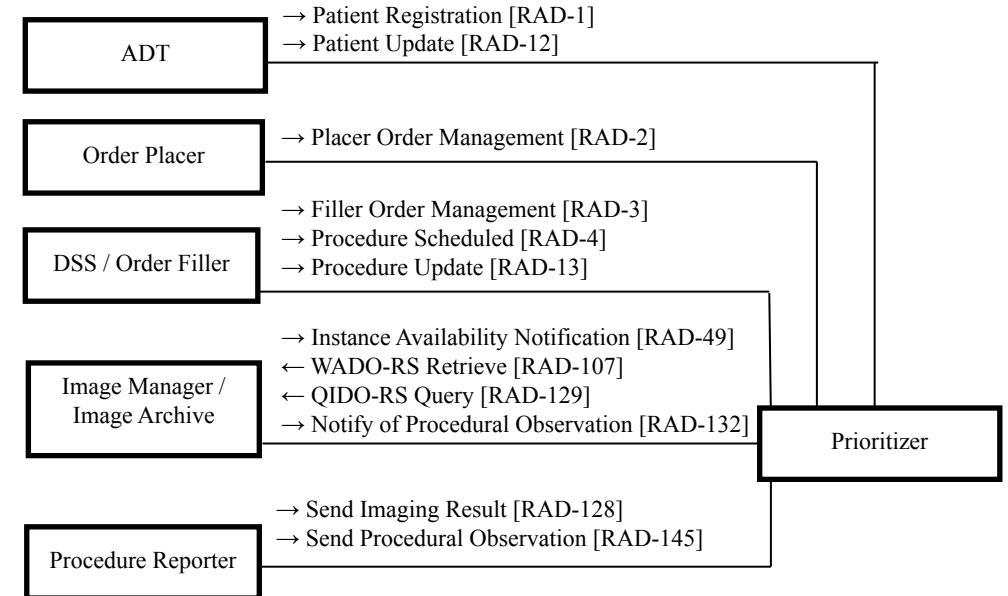
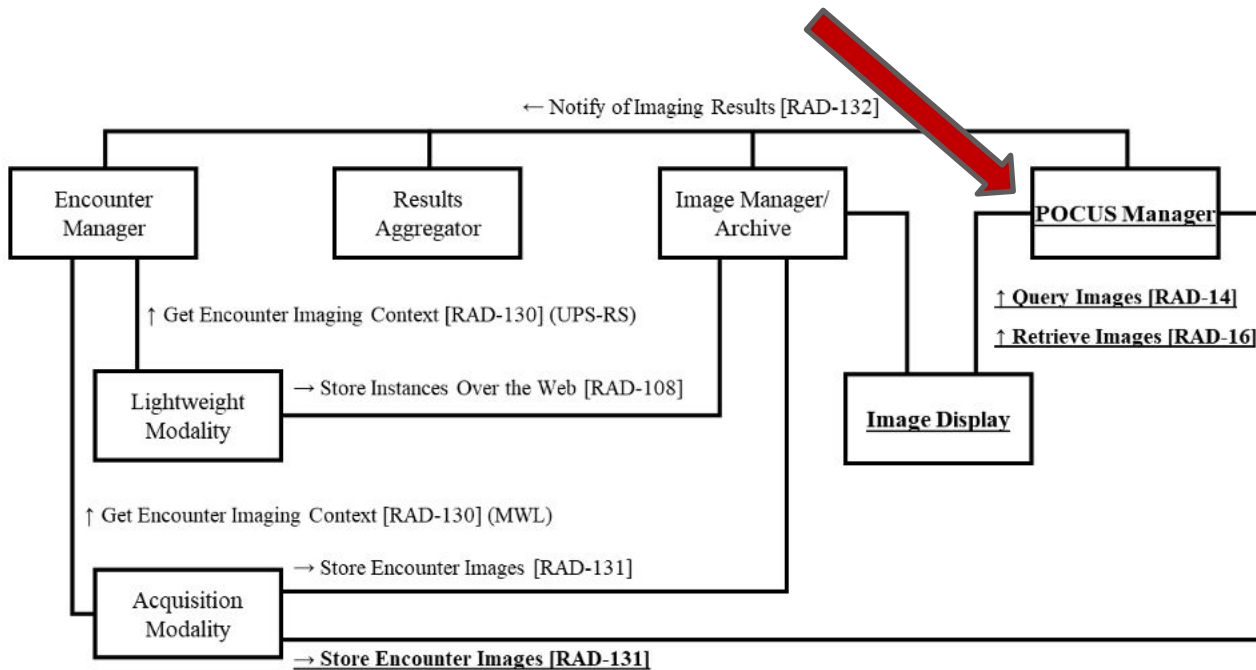


Figure 49.1-1: AIR Actor Diagram

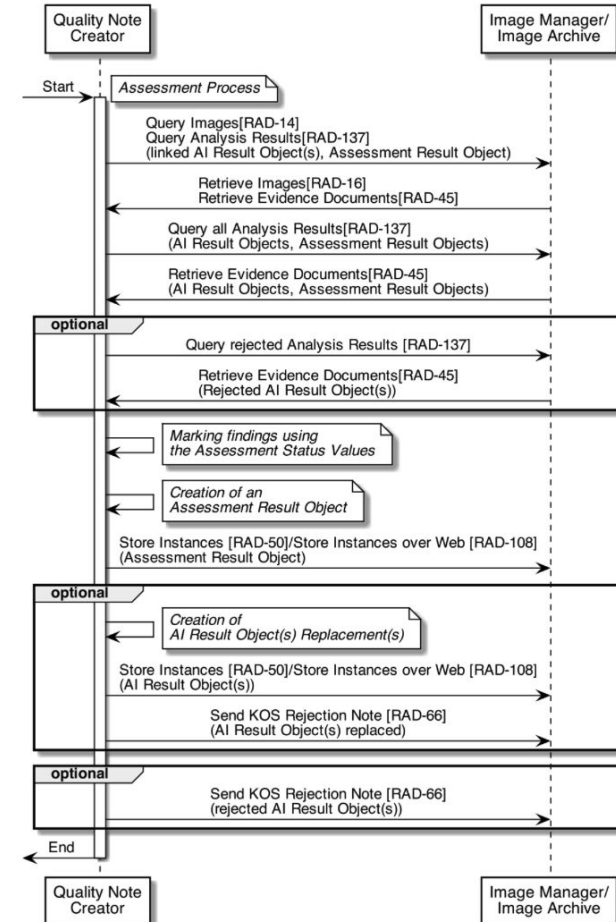
Prioritization of Worklists (POWR)



Point-of-Care Ultrasound Option (EBIW-POCUS)



AI Result Assessment for Imaging



What's so special about IHE Connectathon testing?

- Week-long face-to-face testing of participating product's interoperability
- Participants test with open source test tools and test plans provided in advance.
- Tests are recorded and outcomes are examined and evaluated by neutral monitors (e.g. standards experts, clinical specialists, healthcare IT staff, etc)
- Engineers from vendors, large and small, work closely together to solve issues.
- Participants learn from and make lasting connections with other industry experts
- Successful results earn a Connectathon Seal and are published in the IHE Global Connectathon Results.

Scope of testing in June depends on vendors' Technical System Registration in [Gazelle Test Management](#) (GazelleTM).

“**System Registration**” involves selecting the **Profile/Actor combinations** that you want to test.

- GazelleTM will automatically identify your test partners, i.e. the vendors who support complementary Actors. See menu *Testing*→*Available Partners*.
- Expect interest in profiles for newer technologies (e.g., AI*, FHIR-based reporting use cases, DICOM Web) and our “old favorites” (e.g. Radiology Scheduled Workflow)
- Comment on “chicken and egg” problem

Technical System Registration can be a challenge for first-time Connectathon participants; see next slide...

If you are new to IHE profiles and IHE Connectathons...

- mapping your products' capabilities to specific IHE Profile/Actor combinations can be challenging
- knowing where to start in reading/interpreting the IHE Technical Framework can be challenging

A phone call between your technical staff and the Radiology Technical Project Manager can help point you in the right direction and save you lots of time. Let's talk!

- Summary page for all the IHE RAD profiles:
https://wiki.ihe.net/index.php/Profiles#IHE_Radiology_Profiles
- IHE RAD Technical Framework documentation (the use cases & requirements!!):
<https://profiles.ihe.net/RAD/>
- Short, informative, fun videos from IHE RAD Plan co-chair Brad Genereaux:
<https://www.youtube.com/@HealthcareStandardsProfiles>
for some Radiology profiles, including...
[AI Results](#),
[Integrated Reporting Applications](#),
[Encounter-based Imaging Workflow](#),
[Cross-Enterprise Document Sharing for Imaging](#) (XDS-I)
...and more!!

Anne-Gaëlle Bergé - IHE EU Connectathon Technical Manager

- technical.manager@ihe-europe.net

Andrei Leontiev - IHE Radiology Technical Committee Co-Chair

- ALeontiev@visageimaging.com

Wim Corbijn - IHE Radiology Technical Committee Co-Chair

- Wim.corbijn.van.willenswaard@philips.com

Lynn Felhofer - IHE Radiology Technical Project Manager

- felhofer.lynn@gmail.com

Questions??

